



WHAKARATONGA IWI

**FIRE
EMERGENCY**

NEW ZEALAND

DRONE IMAGERY CAPTURE AND PROCESSING



Craig MacAlpine



WHAKAROTONGA IWI

**FIRE
EMERGENCY**

NEW ZEALAND

COVERING ----

- Capturing Imagery
- How to move captured Data
- Processing of captured data
- How to use the captured Imagery





**FIRE
EMERGENCY**

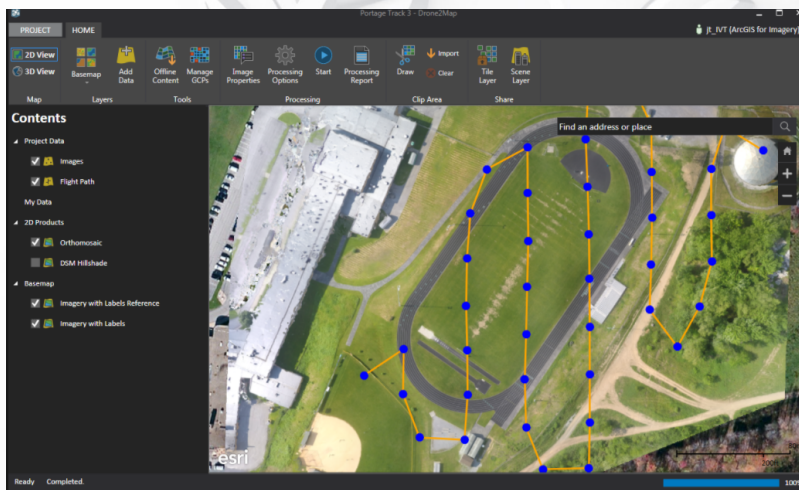
NEW ZEALAND



CAPTURING IMAGERY

- Flying the Drone easy part
- Operator - understanding of flying – what's the output?

- Mission Planning
- Mapping, Orthomosaic, 3D
- Online mapping
- Intelligence packages





**FIRE
EMERGENCY**

NEW ZEALAND

HOW TO MOVE CAPTURED DATA

- Comms, to move data, 3G-4G, Fibre
- Local laptop to process or
- Use of Cloud computing VM
 - Moving RAW and Processed Imagery
 - **Again Type of Intelligence packages to Sort**





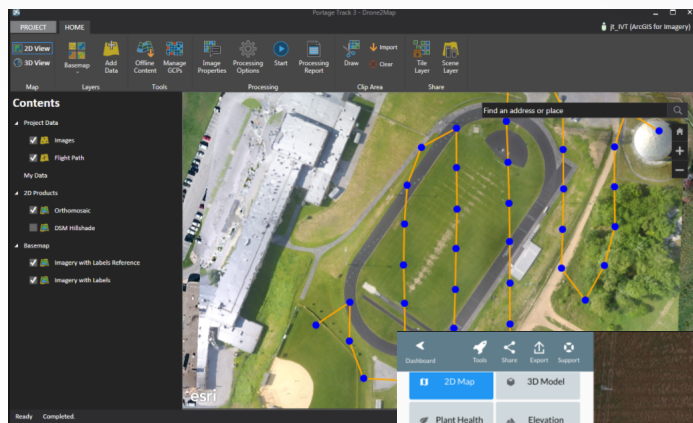
**FIRE
EMERGENCY**

NEW ZEALAND



PROCESSING OF CAPTURED DATA

- ESRI Drone2map
- Pix4d
- Drone Deploy
- Other
- None Spatial Software, Photoshop



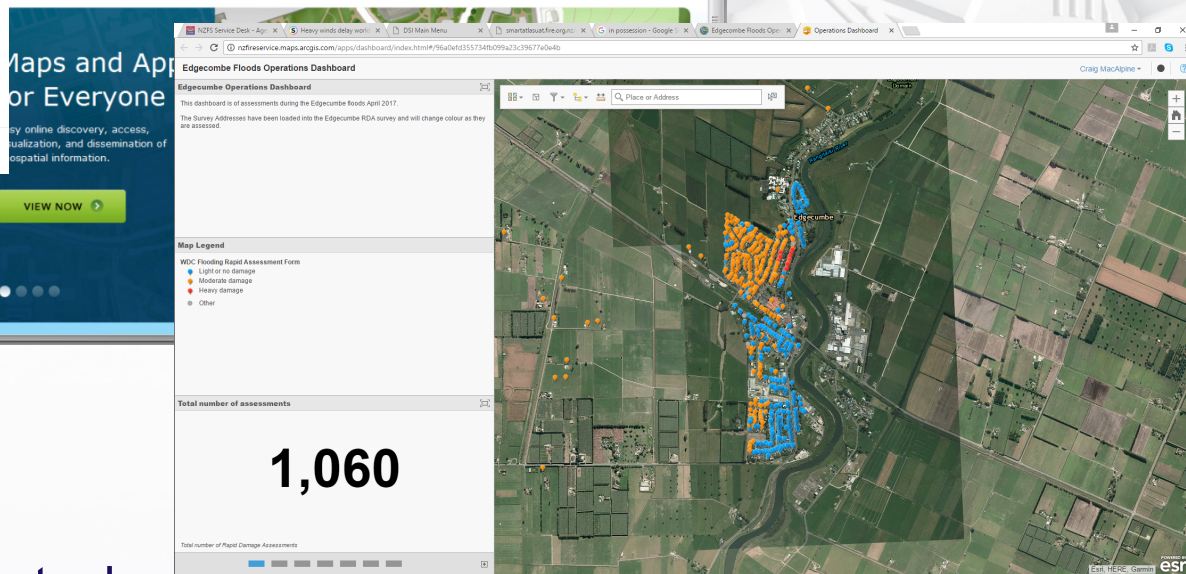
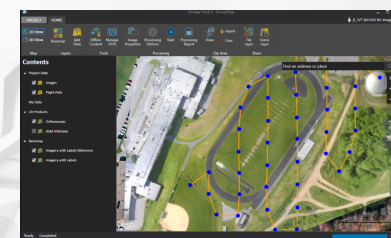
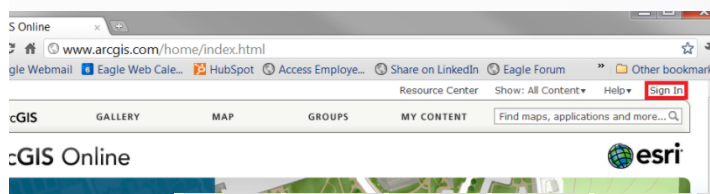
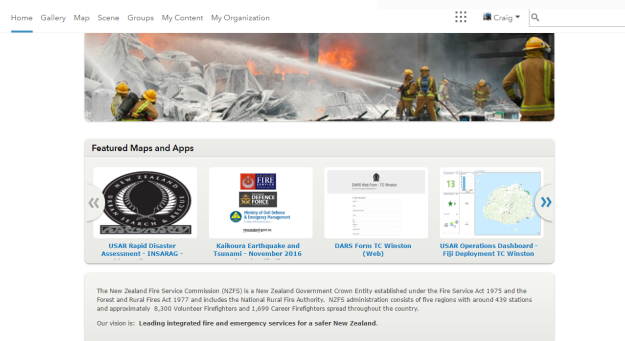


FIRE EMERGENCY

NEW ZEALAND



USING CAPTURED IMAGERY



1,060

Part of the Intelligence Package

- ESRI ArcGIS Online
- ArcMap
- Other Spatial Software
- None Spatial Software, Photoshop, Illustrator



QUESTIONS



Craig.macalpine@fireandemergency.nz

