

Gathering and Visualising PDPs Project Locations

Charlotte Scott | Geospatial Services Leader

Introduction

- PDP is an Engineering and Environmental consultancy
- NZ owned and operated for > 30 years
- We work on a project by project basis working categorised as:
 - Contaminated Land, Environmental Management, Groundwater, Surface Water, Geotechnical, Geospatial & Water Infrastructure
- Generated maps & spatial data for most projects

| Software | Number of Files | Used Since |
|------------|-----------------|------------|
| ArcMap | >16,000 | 2002 |
| AutoCAD | >20,000 | 1990's |
| ArcGIS Pro | >200 | 2017 |

Project Management

- All .mxds (in fact all PDP documents) must start with the project number and a unique letter relating to the document type e.g. A03155101Z001.mxd
 - All mxds created for a report must have a unique Z number.
 - No Z number means not an official document e.g. a working plan
- Project data held in a **Project Management Database on SQL Server (Workbench)**, such as:
 - Project Number (unique)
 - Project Manager
 - Project Type
 - Client Name
 - Budget etc.

The Idea

- Create an **Interactive Map** to search for PDP projects spatially and pop up project info.

Potential Benefits

- Utilise historical data
 - Reduce rework by using existing data
- Improved project management
 - Instead of creating a new project number, find and use an existing project number

Gathering GIS Project Locations

- Focused on gathering ArcMap projects initially.
- Manual method: Open each mxd, draw rectangle covering project extent, open next mxd and repeat...
- Not always obvious project extent
 - Size may be a parcel, cover regional area or multiple areas
- Extremely slow
 - At 2 mins per mxd = 13 working weeks for 1 full time person

Initial Python Script Summarised

List file paths to process

Export Data Frame as JPEG with world file

Add to **Raster Mosaic**

Export Mosaic **Footprints**

Join to PM SQL database by Project Name

Export as new polygon **Feature Class**

Multiple Coordinate Systems

Most .mxds set up in NZTM, but older mxds are in NZMG and some related to engineering projects are in Local Circuits.

Solution

- Create multiple Raster Mosaics for each coordinate system encountered.
- Export Footprints from each Mosaic
- Re-project feature classes into one master feature class in NZTM

PDP Procedures Occasionally Not Followed

- Inconsistent GIS project folder structure & .mxd naming
- Workbench data entry errors e.g. lowercase, not uppercase so join to PM database fails

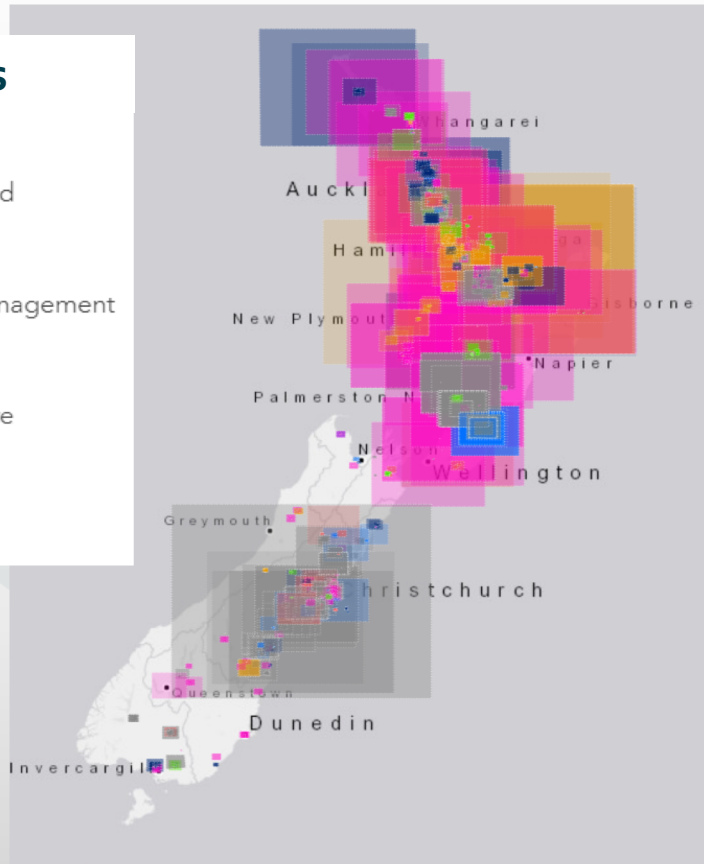
Solution

- Collect error logs
 - Tweak script to capture any inconsistencies and re-run it
- Re-iterate importance of following procedures – staff training

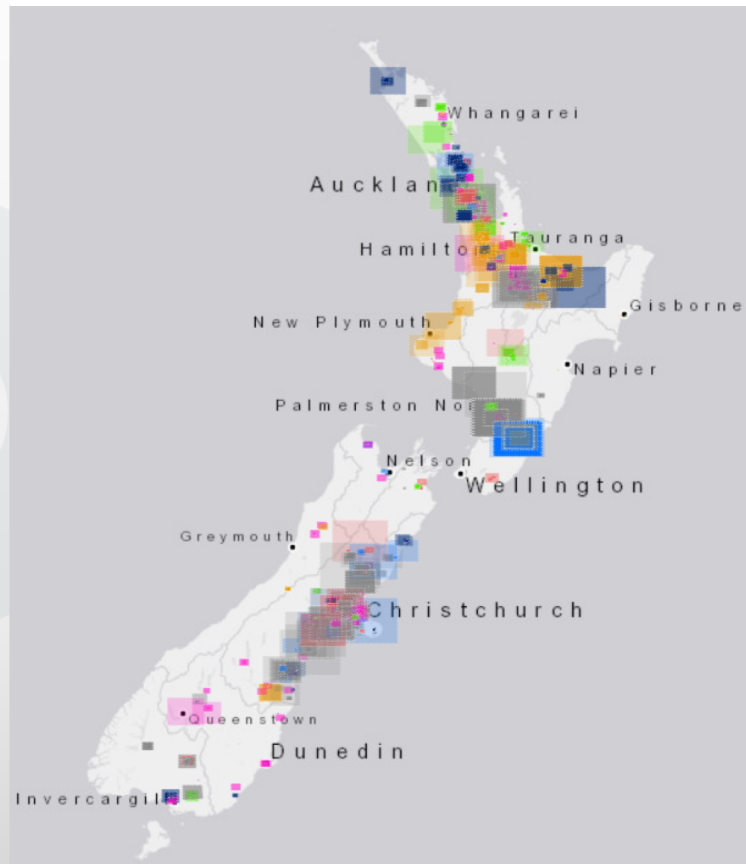
Initial Results in ArcGIS Pro

Project Types

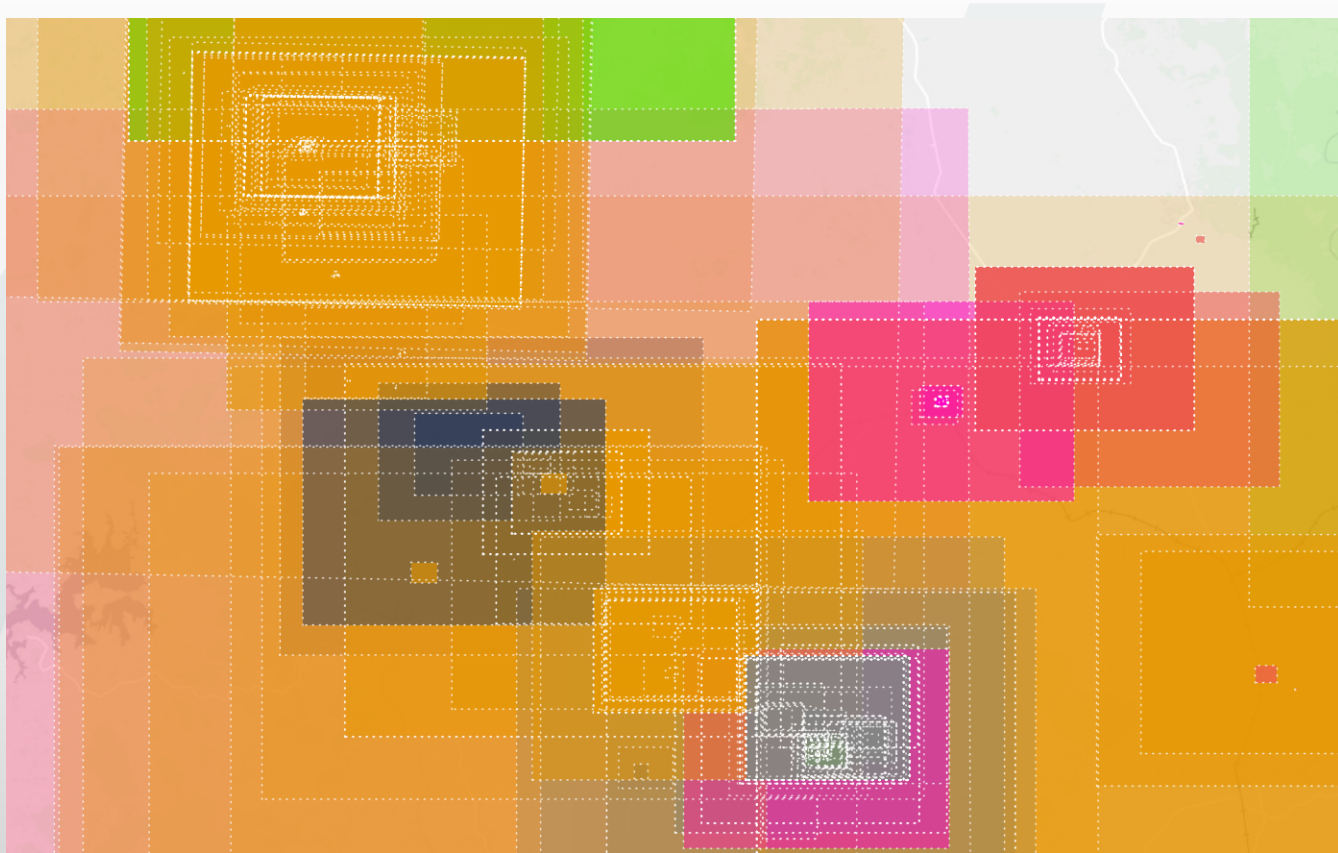
- Geotechnics
- Contaminated Land
- Groundwater
- Environmental Management
- Surface Water
- Water Infrastructure
- Spatial Services
- Other



Map extents <10,000km² only



Still Too Many Polygons



Filters

Profit Centre

- Contaminated Land
- Environmental Management
- Geotechnics
- Groundwater
- Spatial Services
- Surface Water
- Water Infrastructure

Job Type

- Consent
- Default
- (Z) Environmental Management
- Environmental Monitoring
- (Z) Geotechnical Geology Dewatering
- Guidance and Policy
- Irrigation
- Quarry/Mine
- Residential Properties
- (Z) Water Resource Assessment
- (Z) Water Supply
- Water Treatment Plant

Completion Date by Year (to now)

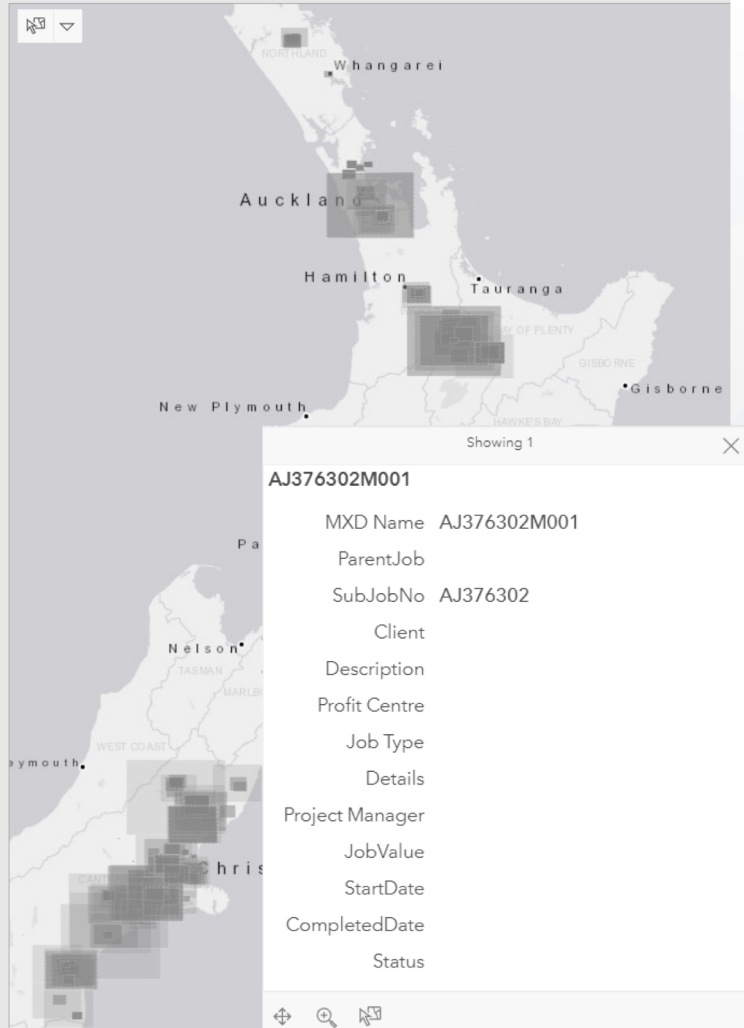
| | | | | | |
|------|------|------|------|------|------|
| All | 2018 | 2017 | 2016 | 2015 | 2014 |
| 2013 | 2012 | 2011 | 2010 | 2009 | |
| 2008 | 2007 | 2006 | 2005 | 2004 | |
| 2003 | 2002 | 2001 | 2000 | | |

Job Status

- All
- Closed
- In Progress
- Open
- Proposal

Project Manager

All



Operation Dashboard App Template

Dynamic Filters

Popups

Completion Date by Year (to now)

| | | | | | |
|------|------|------|------|------|------|
| All | 2018 | 2017 | 2016 | 2015 | 2014 |
| 2013 | 2012 | 2011 | 2010 | 2009 | |
| 2008 | 2007 | 2006 | 2005 | 2004 | |
| 2003 | 2002 | 2001 | 2000 | | |

Job Status

| | | | |
|----------|--------|-------------|------|
| All | Closed | In Progress | Open |
| Proposal | | | |

Project Manager

All ▾

Search for an MXD

All ▾

Search for SubJob Number

All ▾

Search for Main Job

All ▾

Search for Client

All ▾



Experimented with other app widgets, but filters were the most useful.

Next Phase

- Identify all inconsistencies and re-run script to capture all MXD extents
- Data cleanse & remove duplicate extents
- Add thumbnails of JPEGs generated to popup
- Only captured ArcMap projects, so need to capture CAD next
 - Export pdfs – convert to JPEG and use convert to Raster Mosaic etc..?
- More work to do, but is already proven to be a useful tool!

Questions?