

Wilding Conifer Information System



Wilding Conifer Control

National Programme



National Programme

Before Spatial Technology



Objectives

Wilding Conifer Information System



Outcome

Wilding Conifer Information System



Home

Wilding Conifer Information System (WCIS)

The WCIS is a suite of web and mobile applications which support the National Wilding Conifer Control Programme.

These applications are designed to collect and record the extent and details of infestations, related activities, operational areas and points of interest.

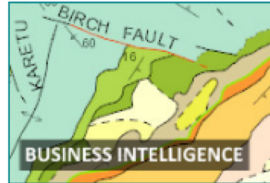


More information on the WCIS can be found here: [Land Information New Zealand](#)

Apps & Data - Copyright © 2017 Land Information New Zealand

Developed by Eagle Technology Group Ltd and powered by [Esri](#)

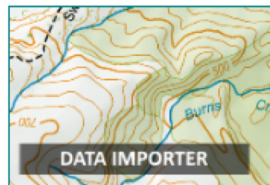
[Less](#)



Business Intelligence

Web Mapping Application

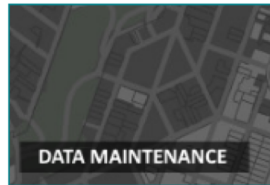
Perform exploratory and interactive analysis on infestations, related activities, operational areas and points of interest that have been entered into the WCIS.



Data Importer

Web Mapping Application

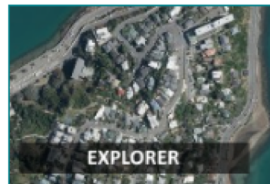
Import GPS (GPX or SHP (ZIP)) recordings of infestations, related activities and points of interest.



Data Maintenance

Web Mapping Application

Record and update infestations, related activities, operational areas and points of interest information.



Explorer

Web Mapping Application

Explore infestations, related activities, operational areas and points of interest that have been recorded in the WCIS.



Explorer - Public

Web Mapping Application

Explore limited infestation information that has been recorded in the WCIS.



Data Maintenance

Information Captured





Pan



Create



Select



Undo



Redo



Copy



Paste



Find



Layers



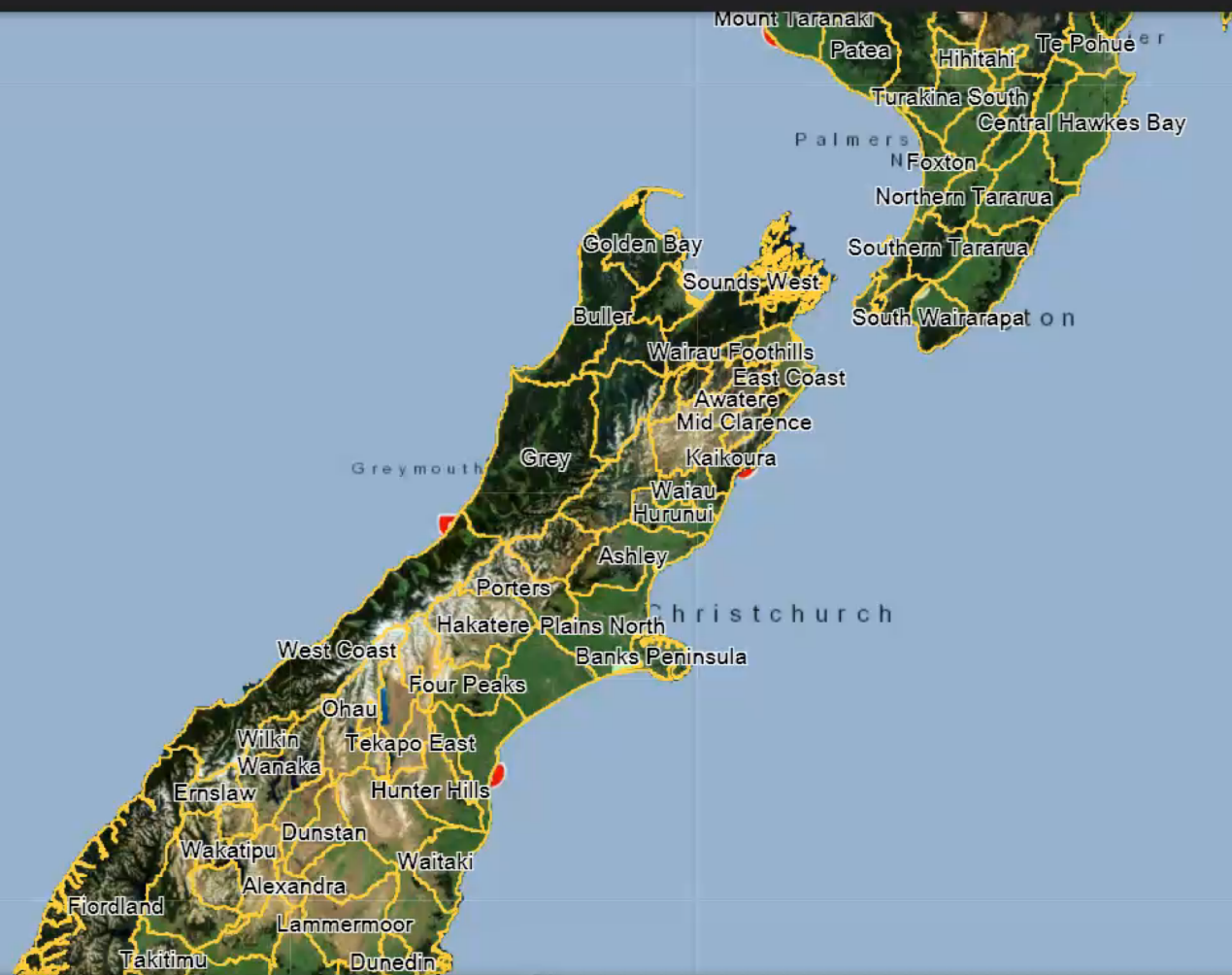
Basemaps



Plans



Messages



Data Maintenance

Adding and Editing Data

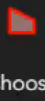




Pan



Create



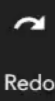
Choose



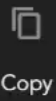
Select



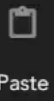
Undo



Redo



Copy



Paste



Find



Layers



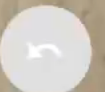
Basemaps



Plans



Messages



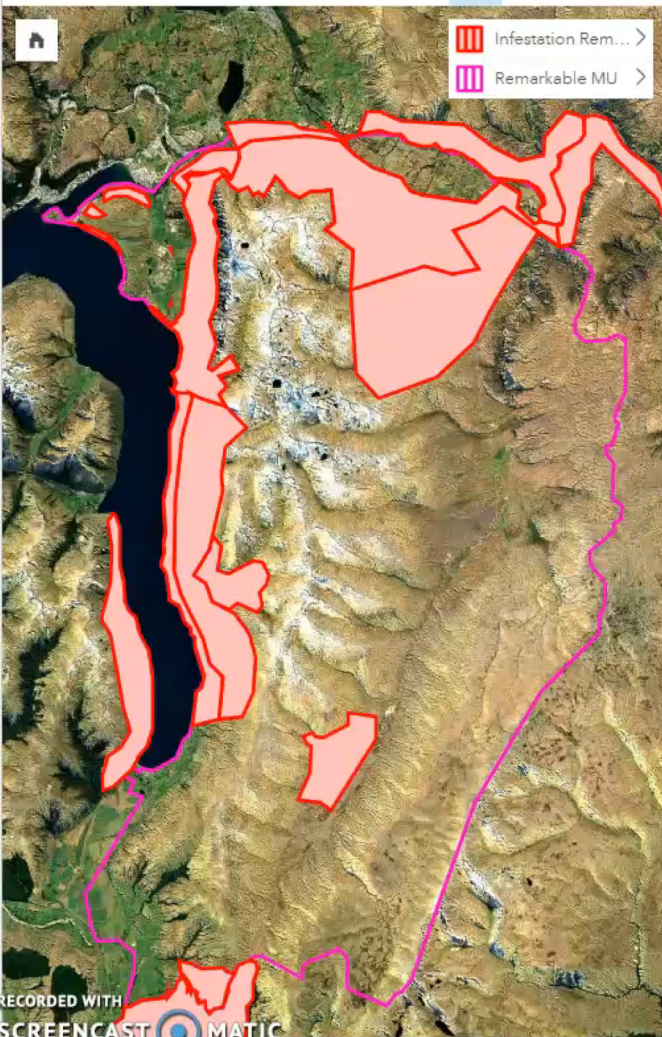
Business Intelligence

Smart Reporting

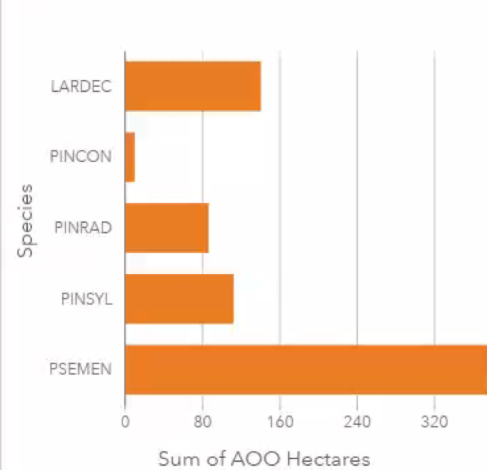




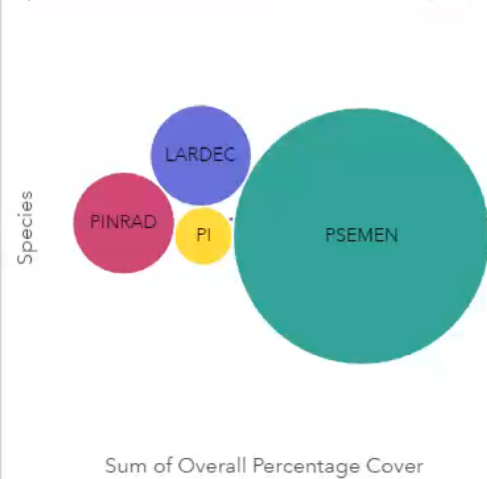
Remarkables Known Infestation



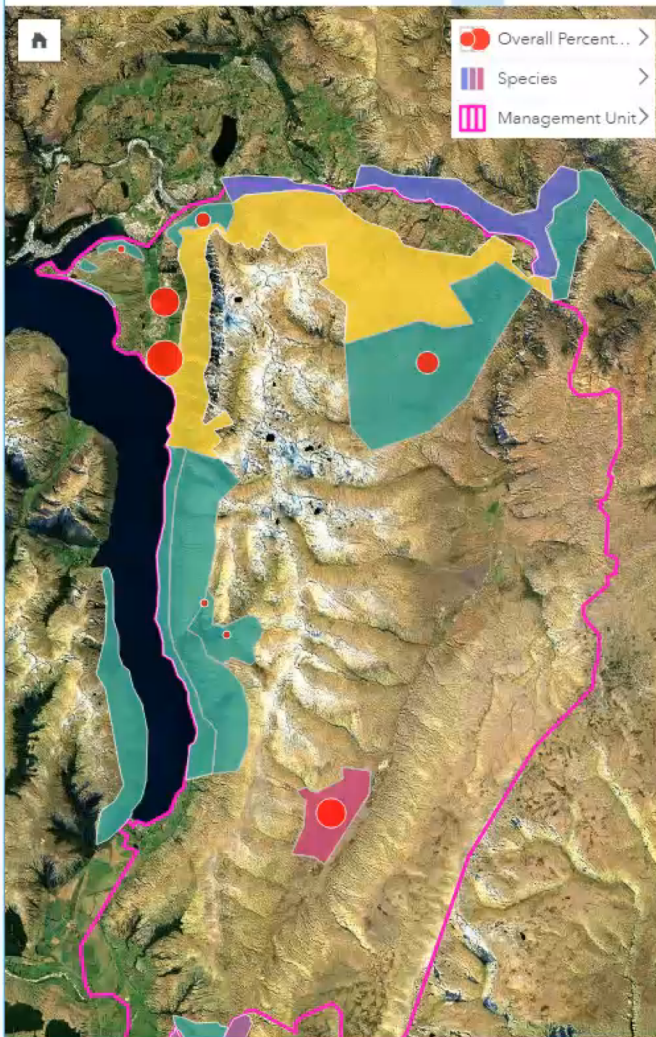
Area Occupied by Species



Species of Infested Areas




Infestation Species and Density



Public Explorer


Engaging the Public



 Near Me

Search an address or locate on map

Type Address



Show results within 5 Kilometers

<

>

125



Welcome to the Wilding Conifer Information System

This is a where you can see what's happening around the country to control one of our most invasive pests, wilding conifers.

OK

Wilding Conifer Information System Public View

RECORDED WITH SCREENCAST MATIC



App State

Click to restore the map extent and layers visibility where you left off.

✕

Wilding Conifer Information System

