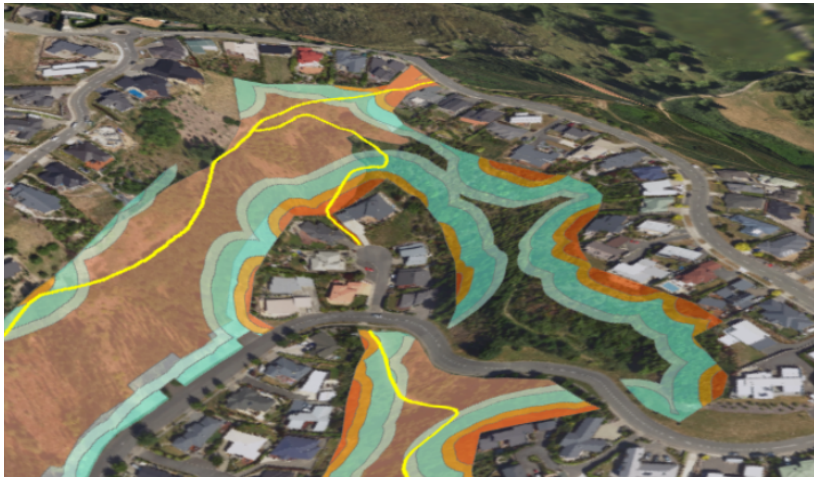


Working Together – Sharing Spatial Information



2018 New Zealand
User Conference
21 Aug 2018



Kilmeny Stephens, GISP
Team Leader GIS

Sharing Spatial Information

 Top of the South Maps

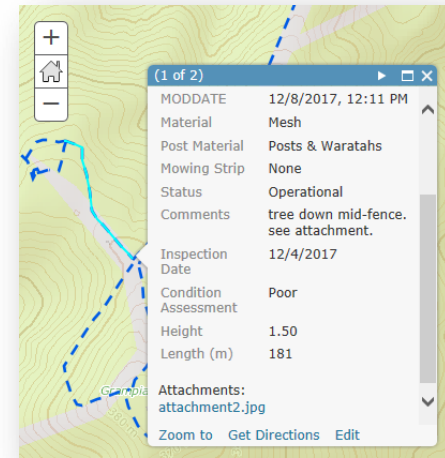
 Nelson City Council
te kaunihera o whakatū

 tasman
district council

Public



Consultants
Contractors



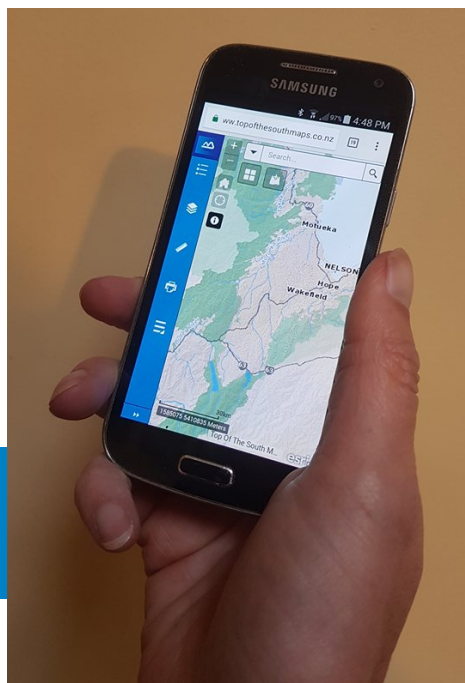
Council Staff
Private Landowners

Sharing – Public



[Top of the South Maps](#)

- Upgraded Oct 2017
- Tasman District Council & Nelson City Council
- Audience
 - Ratepayers
 - Local Businesses
 - Tourists
- What's New?
 - Historical Aerials
 - 1940s & 1980s
 - Mobile Devices
 - Tools added
 - Draw & Coordinates
 - My Location
 - Add your own files



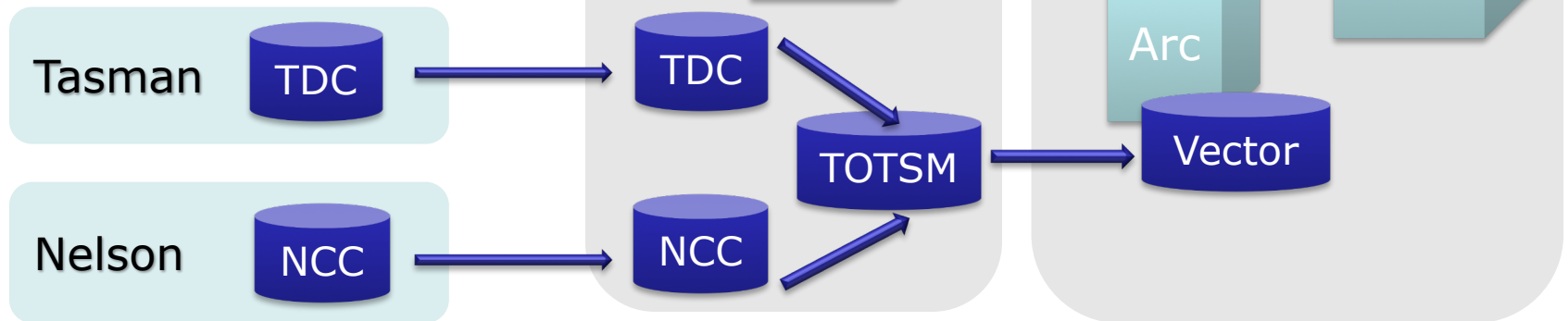
Sharing – Public



Top of the South Maps



- Test & Prod
- GBS & Datacom
- Web App Builder
- ArcGIS 10.5.1



Sharing – Public

Freedom Camping Bylaw 2017

The screenshot shows the Nelson City Council website page for the Freedom Camping Bylaw 2017. The page has a blue header with the council logo and navigation links. The main content area is titled "Bylaw 227 Freedom Camping Bylaw 2017" and includes a sub-header "In this section:" followed by a list of links such as "Mayor and Councillors", "Jobs", "Consultations", "News", "Plans, strategies, policies", "Bylaws", "Publications", "Council structure", "Elections 2016", and "Working with Council". The main text explains that the bylaw gives Council powers to regulate and manage freedom camping activities on Council lands and introduces an infringement regime for offences. It also provides a link to download the bylaw PDF and an interactive map to search for a specific area and see what restrictions are in place. The map shows the Nelson region with various areas highlighted in red, indicating where the bylaw applies.

Mapping Our Natural Hazards

The screenshot shows the Nelson City Council website page for "Mapping Our Natural Hazards". The page has a blue header with the council logo and navigation links. The main content area is titled "Mapping Our Natural Hazards" and includes a sub-header "In this section:" followed by a list of links such as "Nelson Plan Overview", "Natural Hazards", "Flooding", "Liquefaction", "Mapping Our Natural Hazards", "Current Nelson Plan engagement", "Research and technical documents", "Draft Regional Policy Statement", "Operative RMA Plans", "Partnering with Whakatū's Iwi", "Non-regulatory environmental programmes", "Draft Nelson-Tasman Joint Land Development Manual", and "Feedback". The main text explains that the council has been refining technical information with a view to map this in the Nelson Plan and have associated planning rules. It also provides a link to download the bylaw PDF and an interactive map to search for a specific area and see what restrictions are in place. The map shows the Nelson region with various areas highlighted in red, indicating where the bylaw applies.

Sharing – Public

- Freshwater Fish Sightings
 - NIWA
 - Annual Update

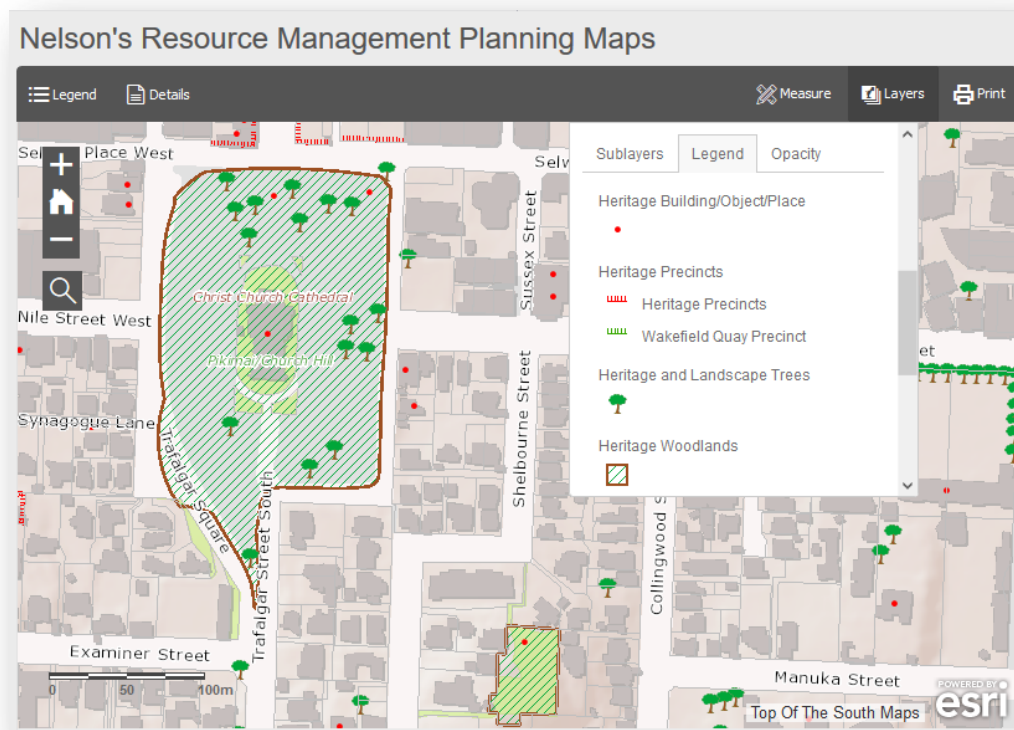
Freshwater Fish Sightings



Sharing – Public

- NRMP eMaps
 - Developers
 - Realtors

[NRMP eMaps](#)



Sharing – Public

Project Maitai / Mahitahi Story Map

Project Maitai / Mahitahi, Nelson New Zealand

Cleaning up Nelson's treasured Maitai / Mahitahi River   

Overview

Activities

Community Engagement

History

Ecosystems

About

Overview

Working together with Iwi and the community to improve the health of the Maitai/Mahitahi River, so we can swim safely, collect kai, and value this taonga (treasure) as an integral part of Nelson's physical and cultural landscape, whilst recognising its network functions: drinking water source, flood channel, and storm-water channel.



**PROJECT
MAITAI**
Mahitahi

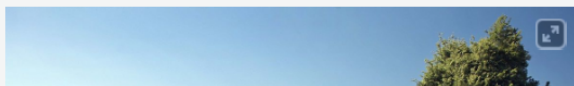
Project Maitai/Mahitahi was a four year project between Nelson City Council and community partners to improve the health of the Maitai River and all its tributaries including Brook Stream, York Stream, Sharland Creek, Groom Creek and Saltwater Creek. The whole project area is highlighted in blue on [this map](#).

The overarching aim of Project Maitai/Mahitahi was to create a river that is safe to swim in and take kai from, and that everyone can enjoy and feel proud of.

The project in its current form ended in June 2018, but the work will continue as restoring a river takes many years and many hands.

More information about the project and its activities can be found on the Nelson City Council [website](#).

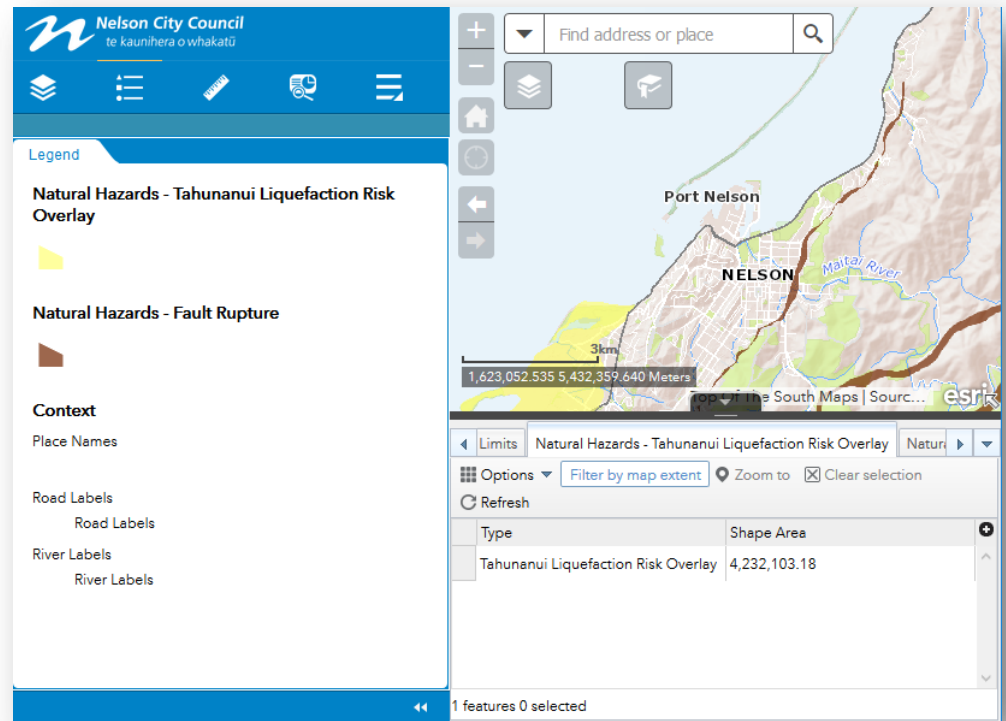
The River



Sharing - Consultants

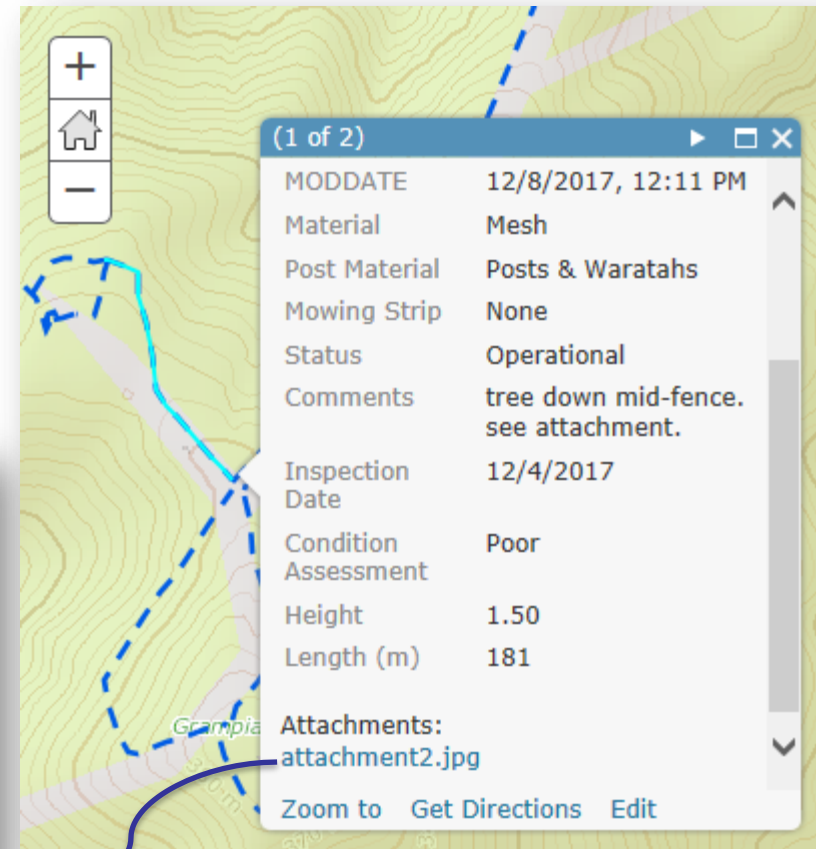


- Nelson Plan Peer Review
- Consultants given logins
- Updated weekly



Sharing – Contractors

- Reviewing Council data in the field
 - Collector
 - Attachments



Sharing – Contractors

- Defensible Spaces
- Web Scene
 - 3D to show slopes



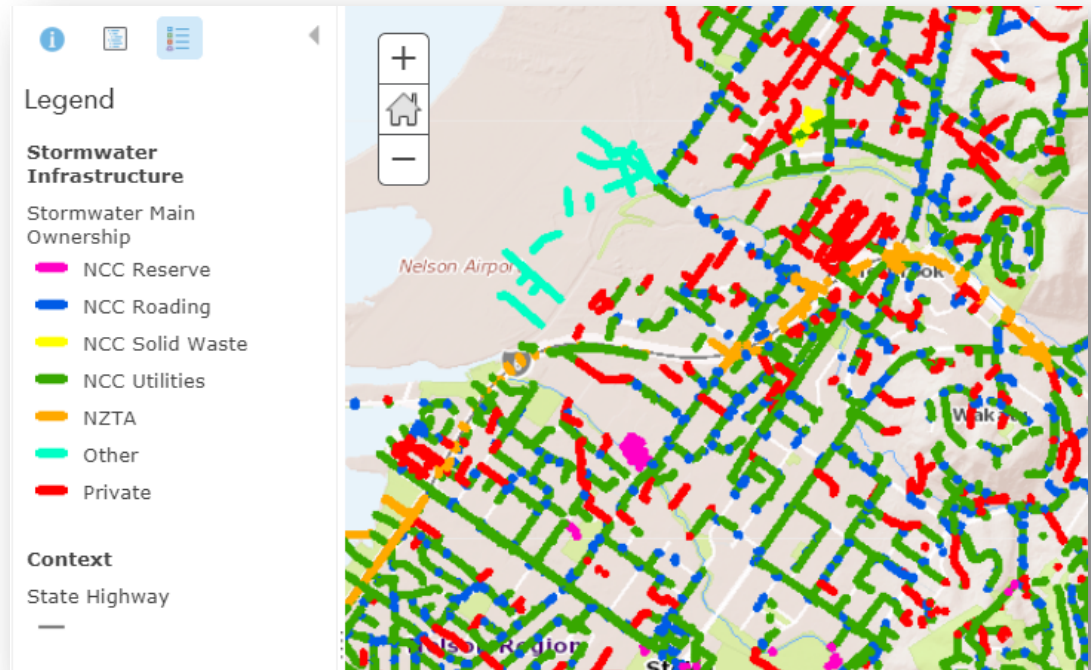
Sharing – Private

- Potential Significant Natural Areas
 - Webmaps
 - Appropriate permissions
 - Subsets of data
 - Sharing with named users



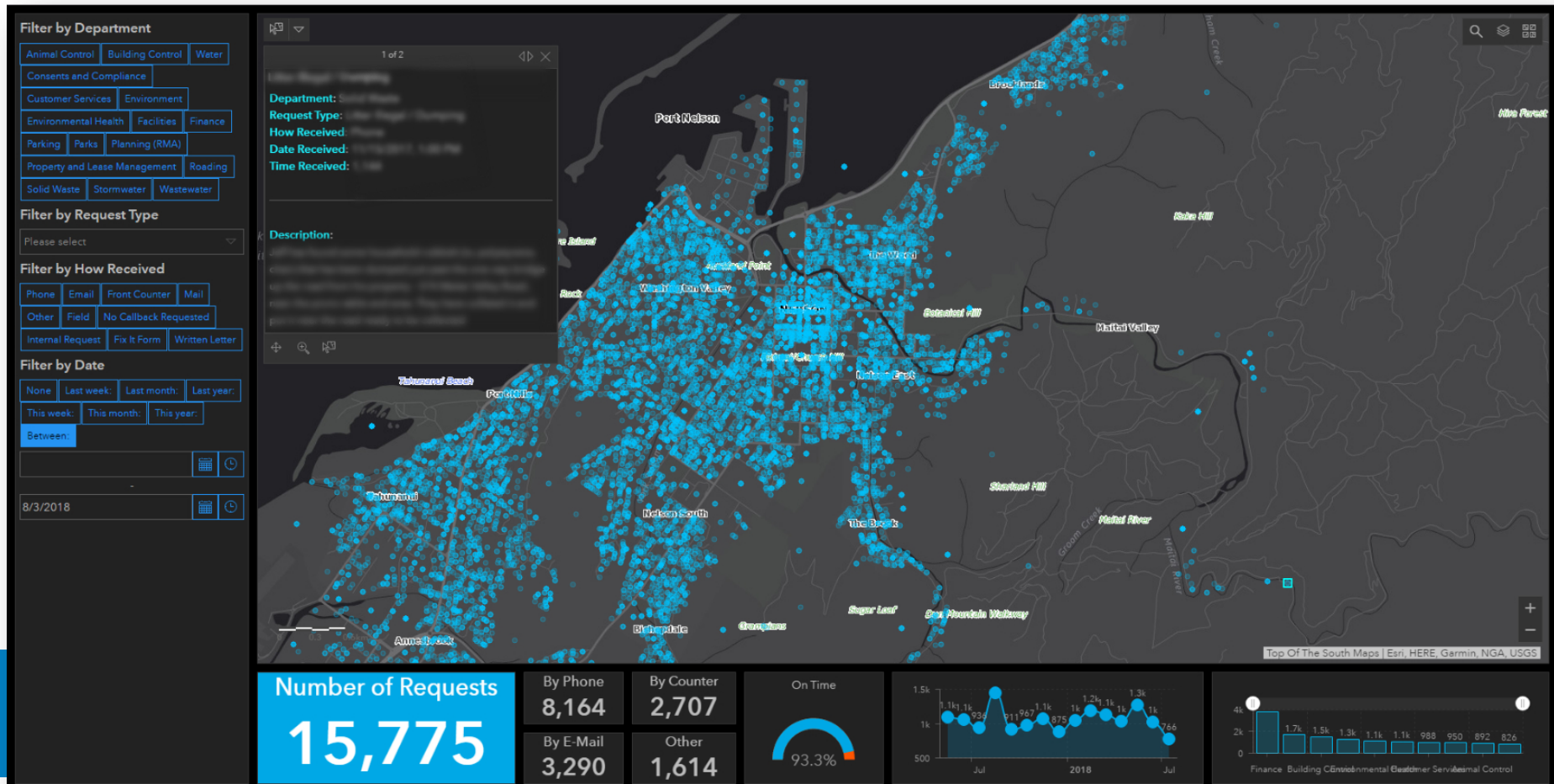
Sharing – Staff

- Data Quality
 - Stormwater Assets
 - Checking Ownership using symbology



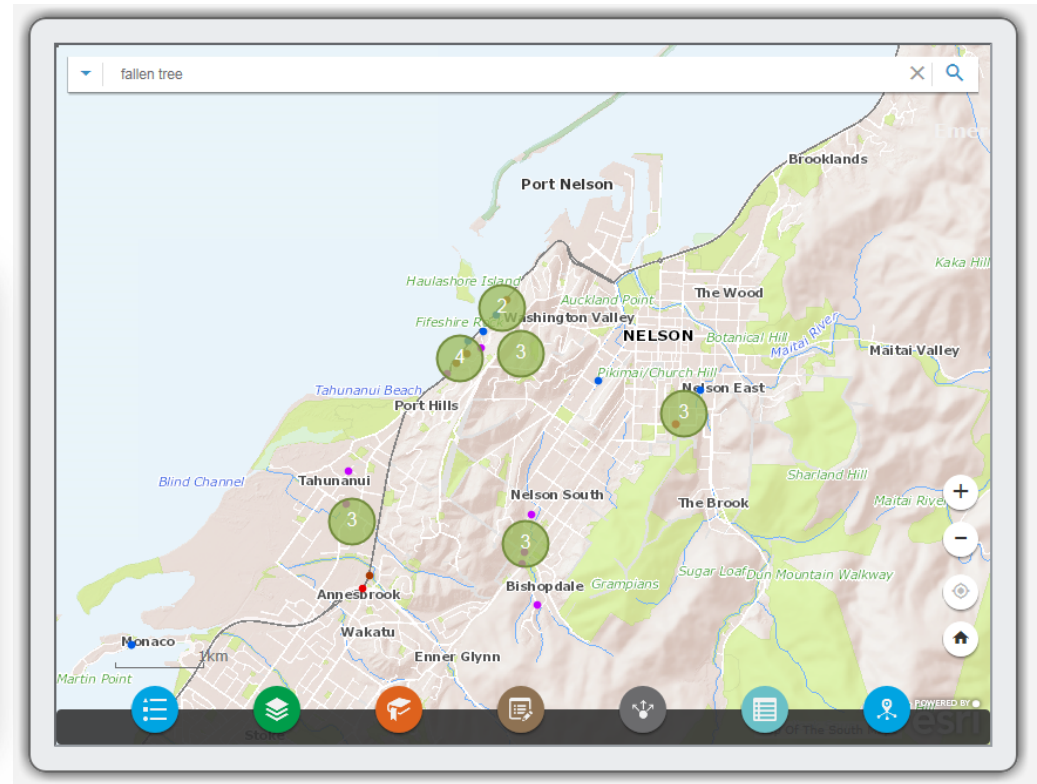
Sharing – Staff

- Dashboard – Service Requests



Sharing – Emergencies

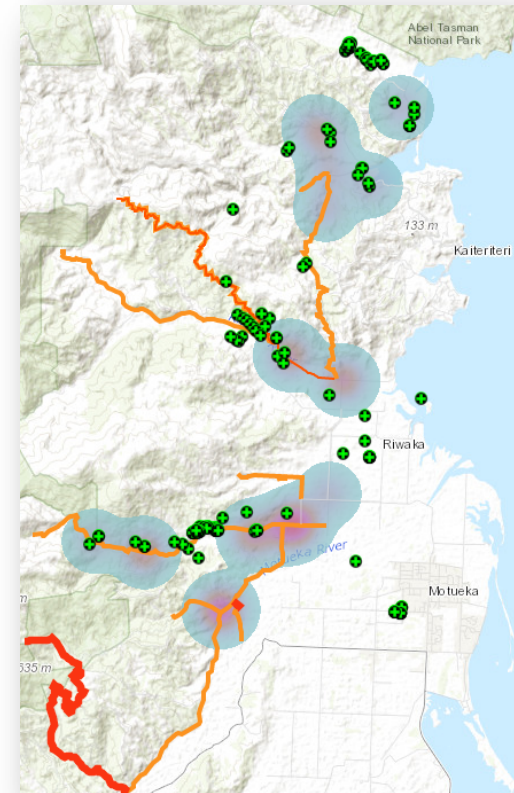
- Preparing - Infrastructure Teams
 - Collector
 - Operations Coordination



Sharing – Emergencies

Ex-Tropical Cyclones Fehi and Gita

- Collector
- Emergency Operations Centre (EOC)
- AGOL
- Roads
 - closures
 - NZTA feeds



Sharing – Emergencies

Ex-Tropical Cyclone Gita

- Data entry
 - Addresses
 - Welfare & Building Inspections
- Dashboards
- Geotagged photos



Working Together – Sharing Spatial Information

Questions?

Kilmeny.Stephens@ncc.govt.nz