

NEARMAP VERTICAL

CURRENT LOCATION
CONTEXT, AVAILABLE
INSTANTLY



Captured: 12/01/2020
Auckland Central, Auckland

PRODUCT SUMMARY

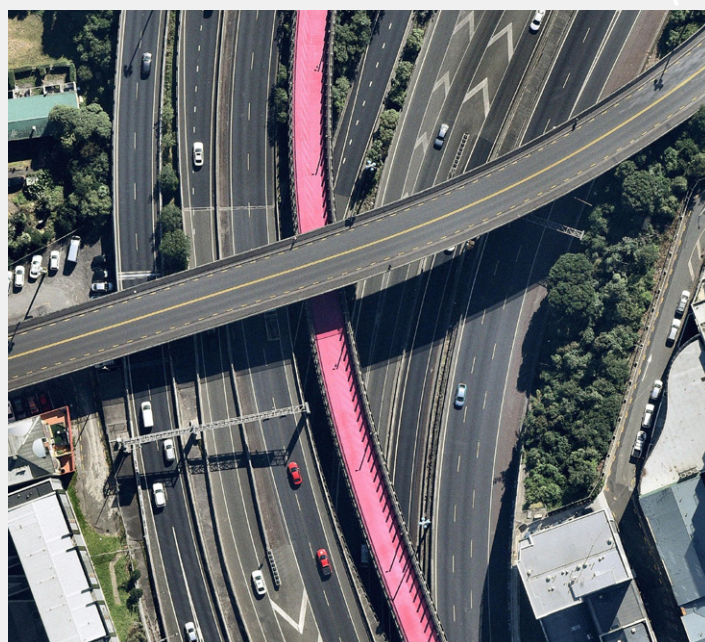
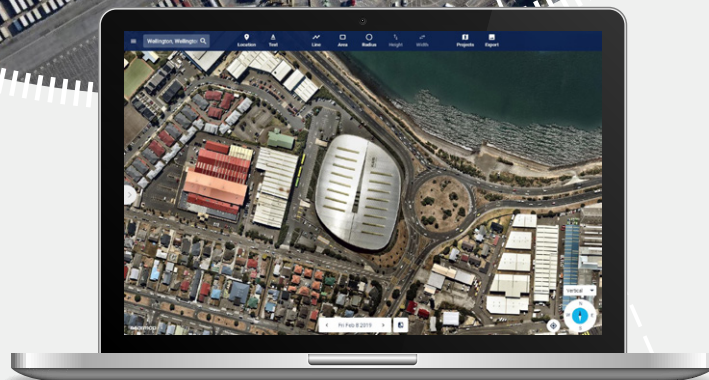
Nearmap Vertical provides an orthogonal imagery base layer that delivers a clear, top-down view of your work sites and property assets.

Commercial businesses and government organisations now have instant access to current, high resolution aerial imagery of urban and regional areas across New Zealand. Eighty percent higher resolution than standard commercial satellite maps, our imagery provides a detailed, up-to-date view so you can conduct detailed virtual site visits without leaving the office. Nearmap allows you to inspect locations remotely, identify and target new business, estimate and quote with accuracy, and monitor change over time.

Every Nearmap subscription includes access to MapBrowser, a simple, intuitive web application for searching and analysing Nearmap's library of aerial imagery. MapBrowser also includes powerful measurement tools, and allows users within your organisation to easily collaborate on location-based projects.

You can also integrate Nearmap imagery with leading GIS and CAD platforms. We handle the storage for you — no downloads necessary.

**CURRENT, CONSISTENT, AND EASY
TO USE. THE WAY AERIAL IMAGERY
SHOULD BE.**



MAPBROWSER: YOUR APP FOR INSTANT LOCATION INSIGHTS



EASY NAVIGATION & COMPARISON

- Easily find locations with auto-complete search
- Compare past and current capture dates with our Split View feature



BUILT-IN COLLABORATION

- Export screenshot with saved annotations
- Communicate precise lat/long coordinates with simple URL sharing



MADE TO MEASURE

- Measure line, area, and radius
- Create and save site plans with the Projects tool



VIEWED YOUR WAY

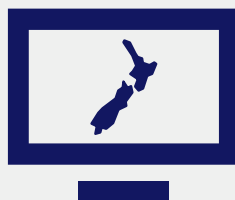
- Enjoy smooth, seamless pan and zoom
- Add roads overlay

PLAYS NICELY WITH GIS & CAD*



- Integrate our imagery into industry-leading third-party applications through API, WMS, MapBrowser Export, and the ArcGIS Online Marketplace to address complex challenges across state & local government, utilities, AEC, insurance, real estate, and solar.

* API access is available with a Nearmap Pro subscription.



OUR IMAGERY COVERS
**73% OF NEW ZEALAND'S
POPULATION —
18,890 KM² ANNUALLY
SPANNING 14 URBAN
AREAS.**

COMPREHENSIVE COVERAGE OF NZ

We update Wellington, Auckland, Christchurch, Hamilton, Huntly, and Kapiti Coast twice a year.

THE TECHNICAL DETAILS

Ground sampling distance (GSD)	6cm (or better)
Absolute horizontal accuracy	60cm RMSEr
Horizontal measurement accuracy	15cm within one photo; 60cm between photos
Image export projection	NZGD2000/UTM
Image bands	RGB natural color

For further information about the Nearmap proprietary camera systems and accuracy, please visit our detailed product documentation at docs.nearmap.com.



CAPTURED: 12/01/2020
Whangaparaoa, Auckland



START WORKING WITH A NEW
BREED OF AERIAL IMAGERY TODAY.

0800 005 935
www.nearmap.com

nearmap