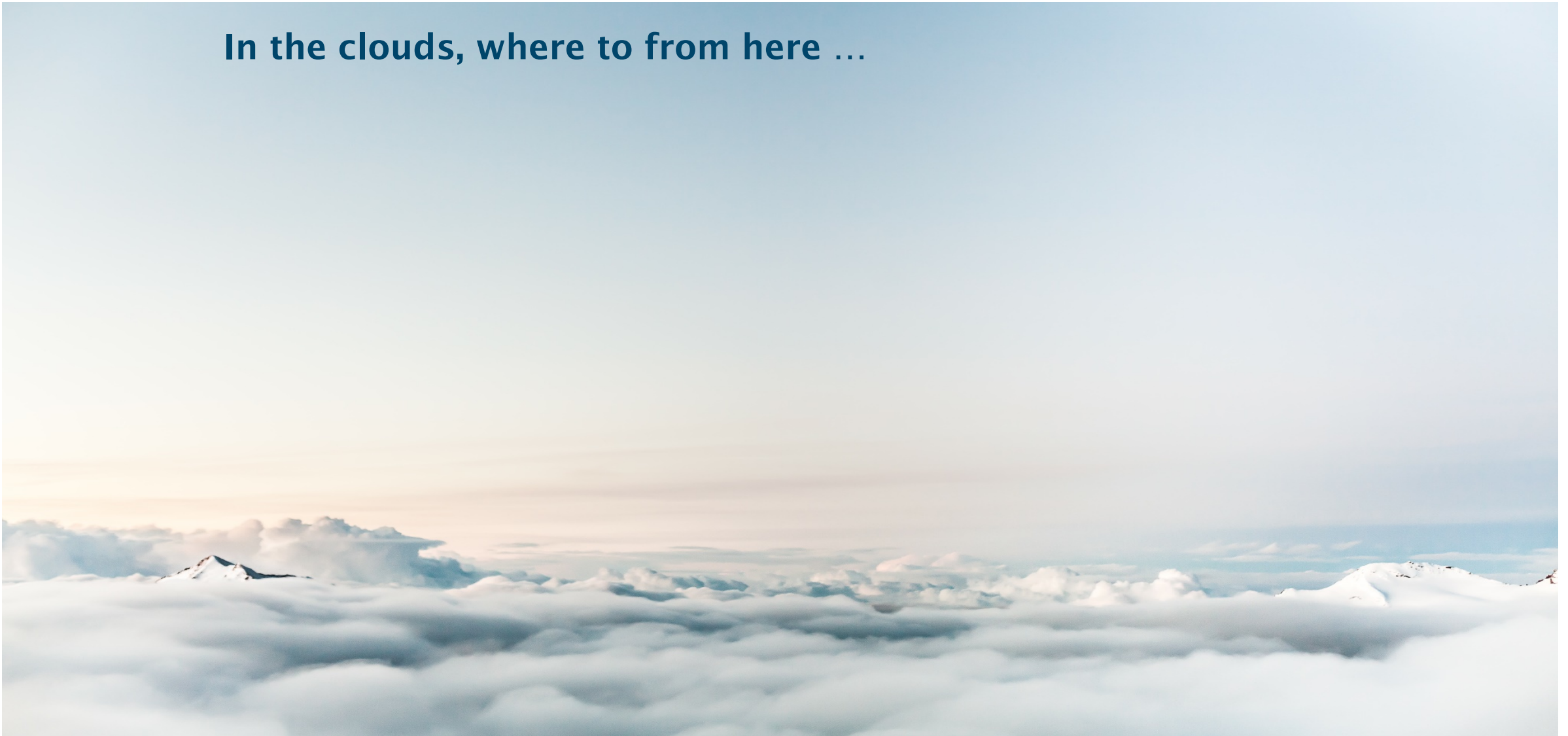


In the clouds, where to from here ...







What I will be covering ...

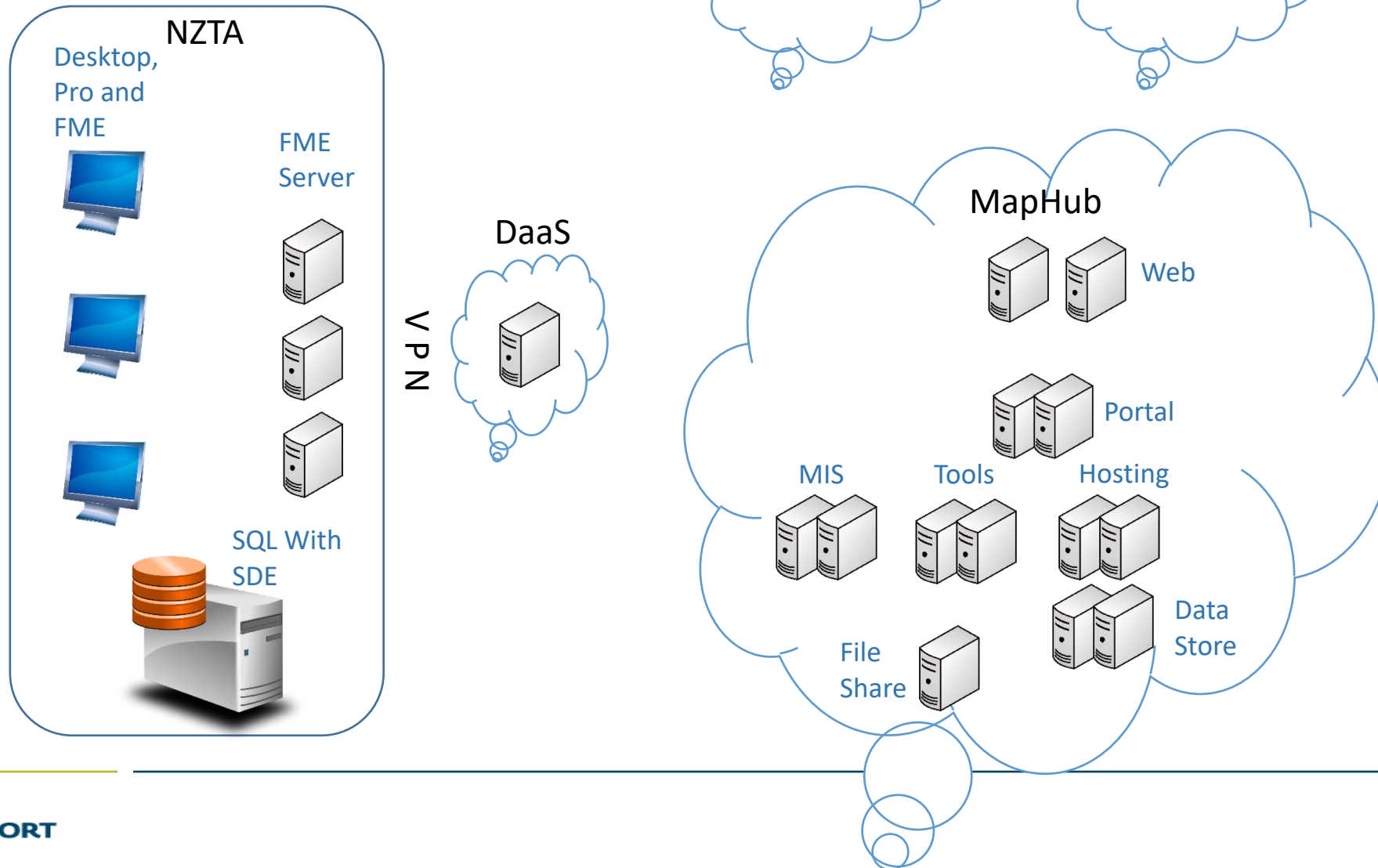
- Context
- Lessons Learned
- Changes and how we managed those
- Impacts
- Enablement
- Where to from here
- Conclusion
- Questions

Context

- Geospatial capability at the NZTA
- Spatial Viewer
- MapHub 1
- MapHub 2



Context



Lessons from the Project:

- Vendor Collaboration does work.
 - The importance of establishing the 'How'.
 - Good communication.
 - Well defined roles and responsibilities.



Lessons Learned

Migration

- System capabilities and strengths
- Optimisation (MIS vs Hosted Services)
- Maintenance and Management
- Scripting
- Registry of dependencies

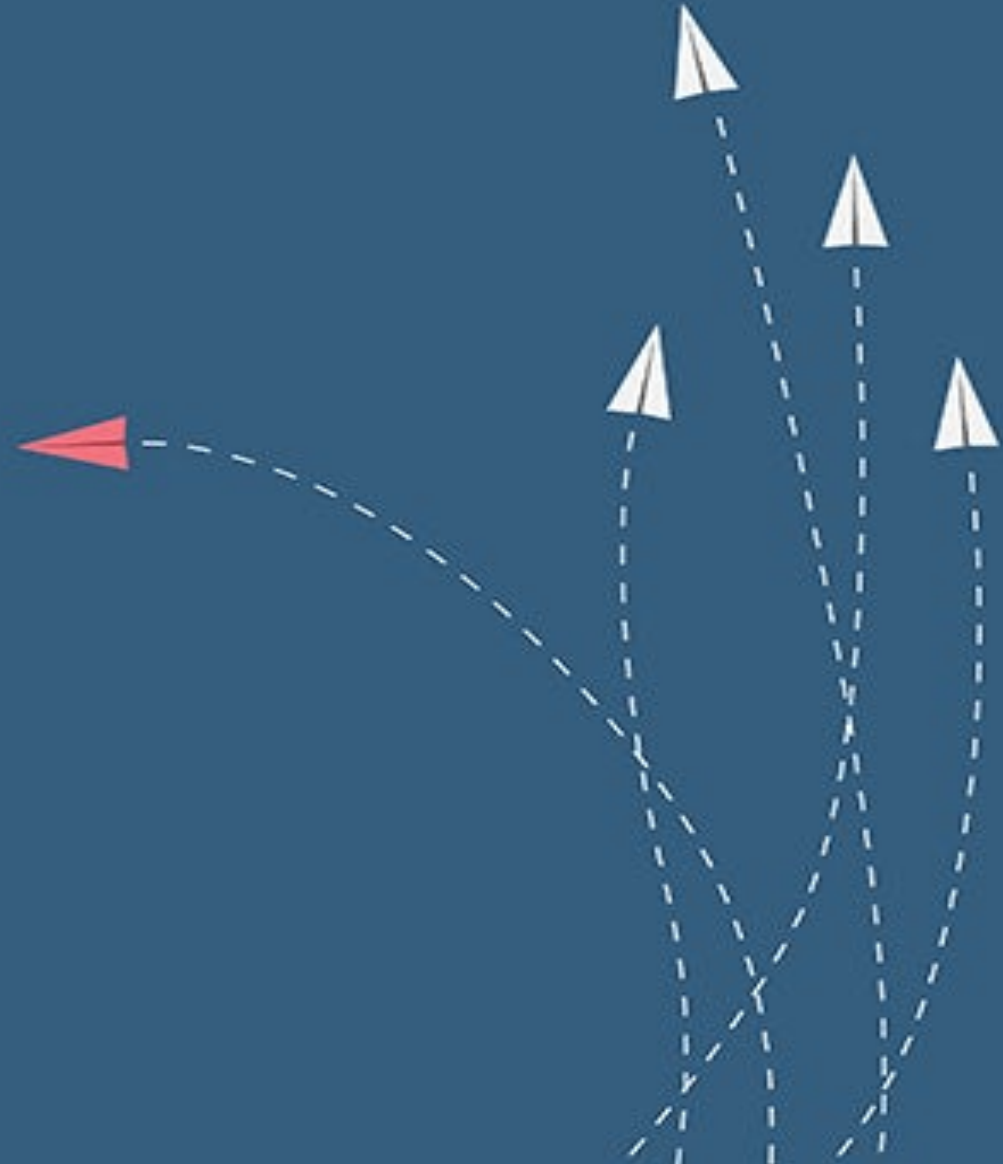
Change

- Change requires time to bed in.

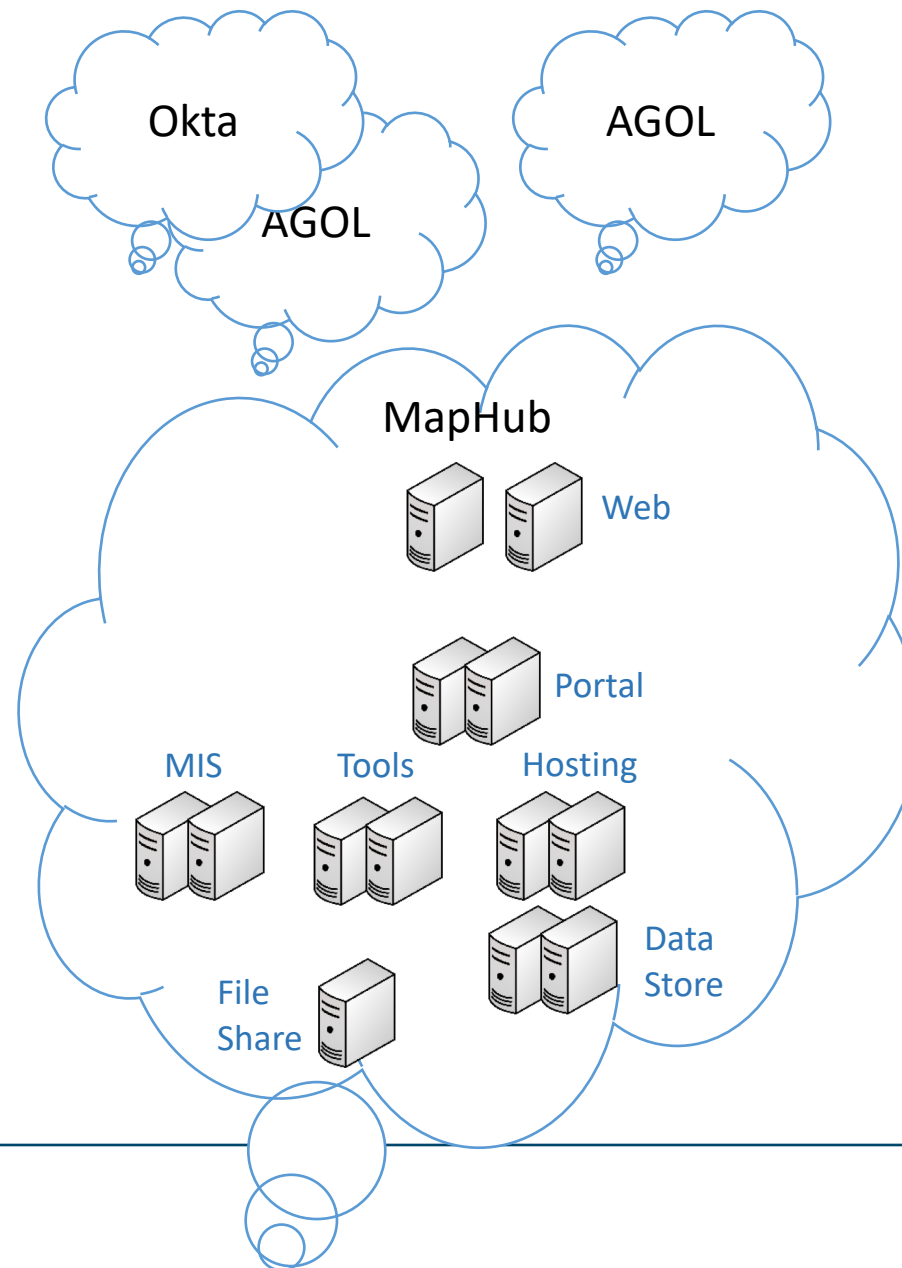
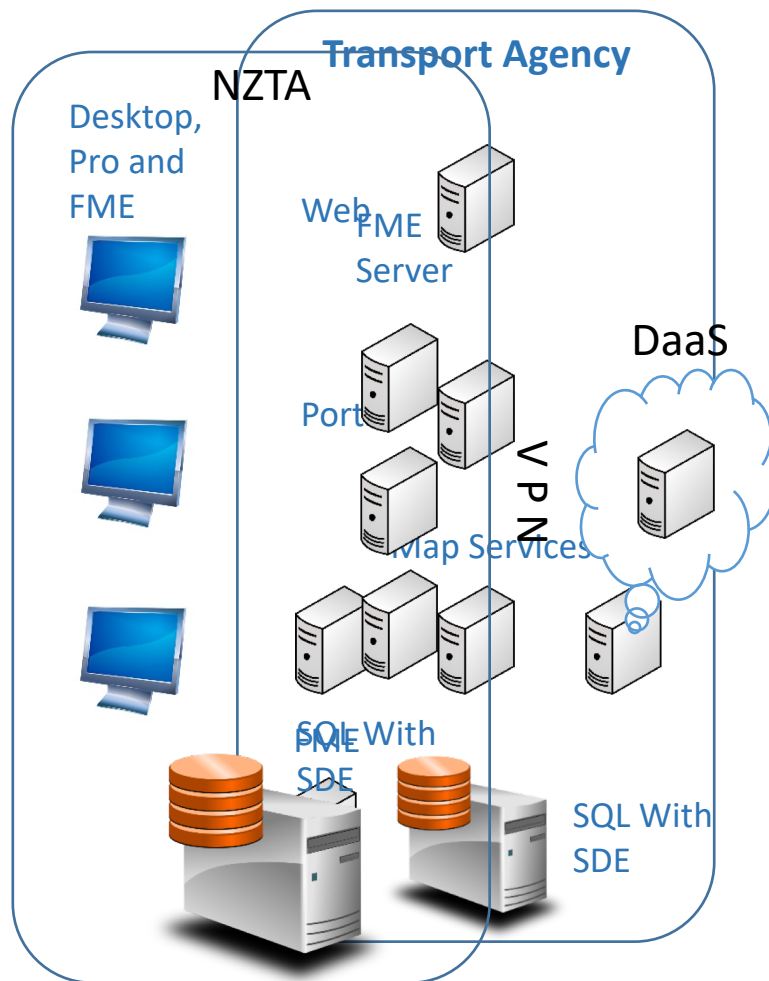
Learning

Change

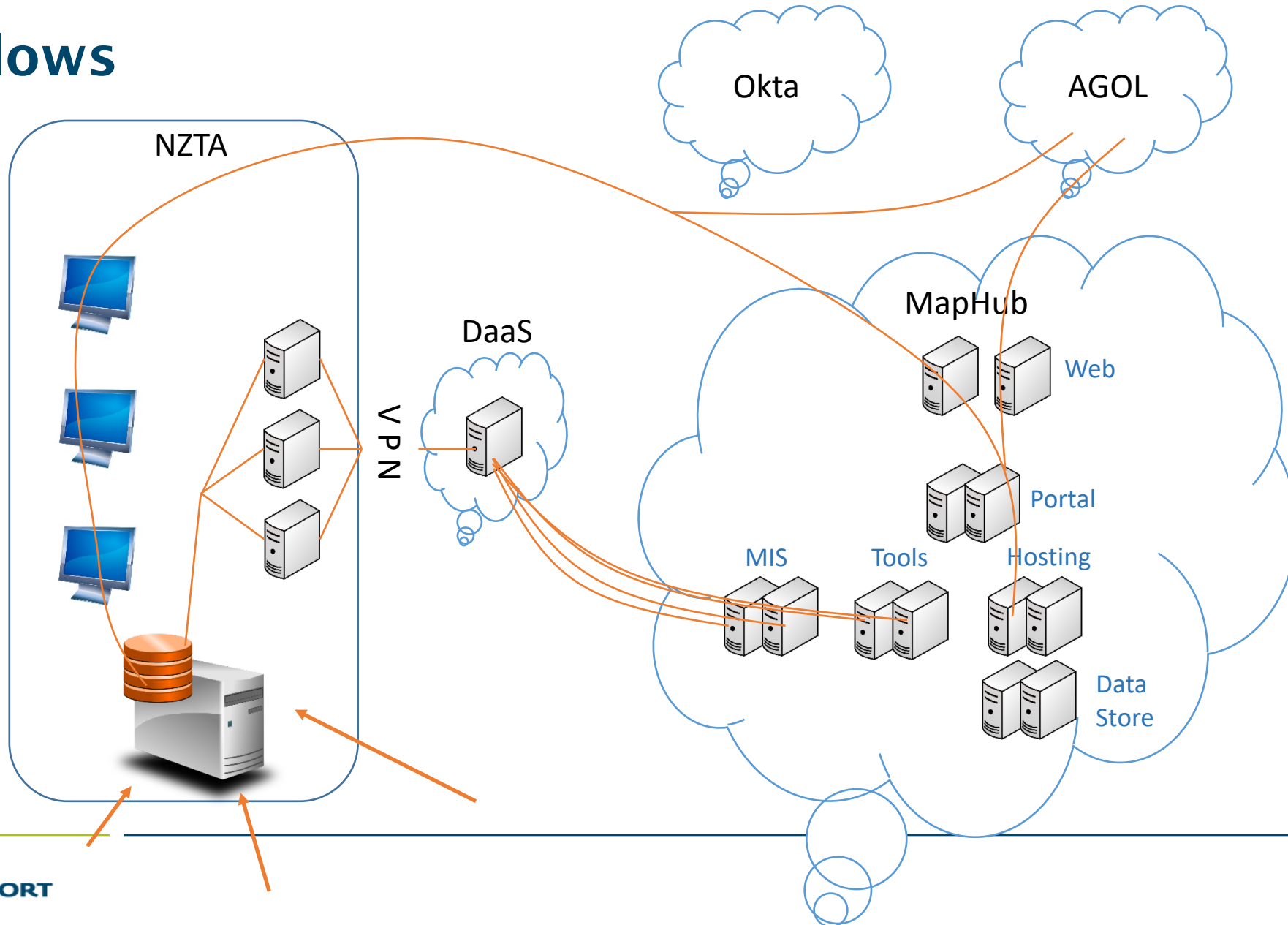
- Infrastructure, which influenced
 - Process
 - User management
 - Access
- MSA which influences
 - Release or change management
- New tools
- Software (Pro)



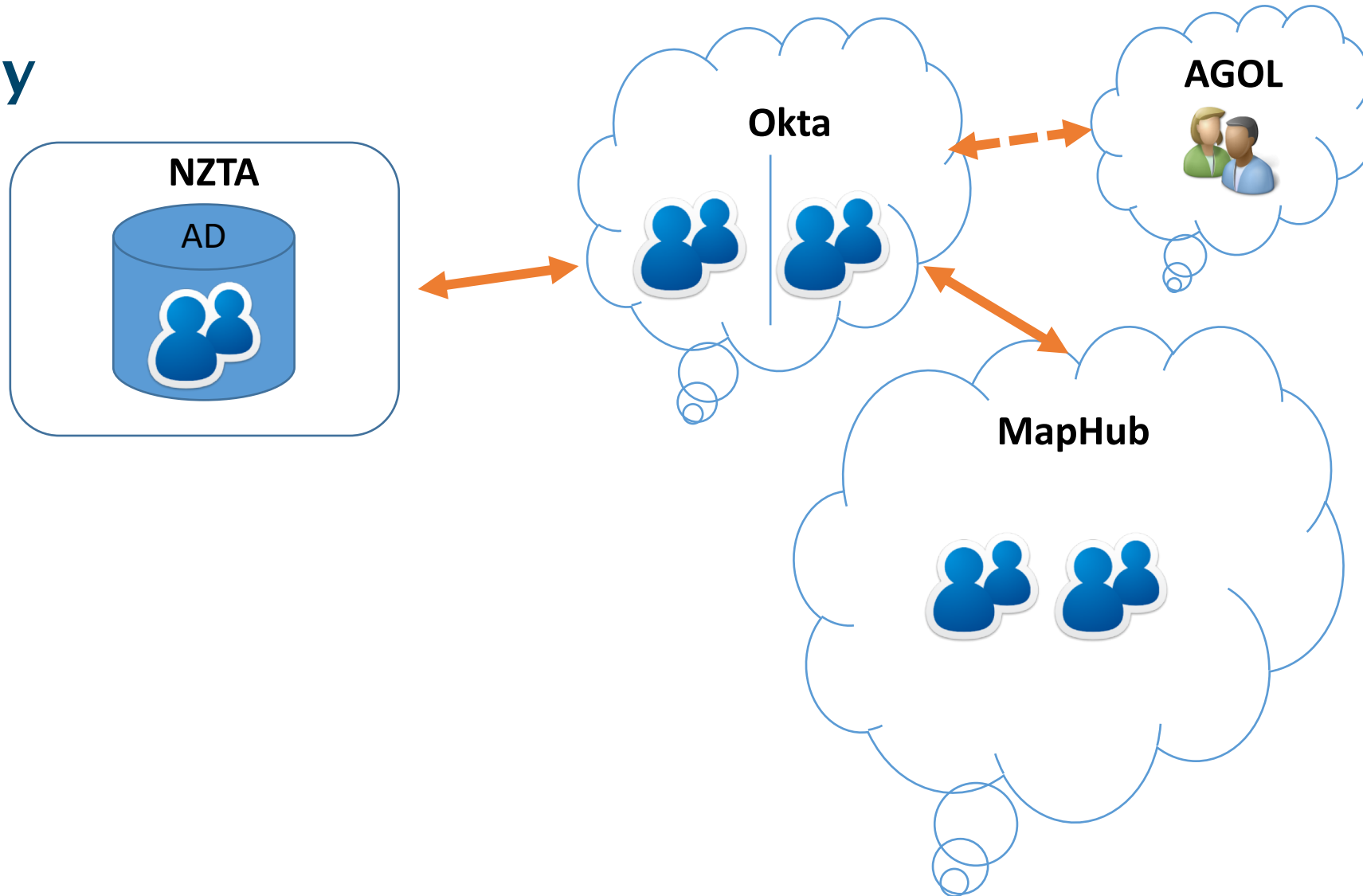
Stage 2 Capability



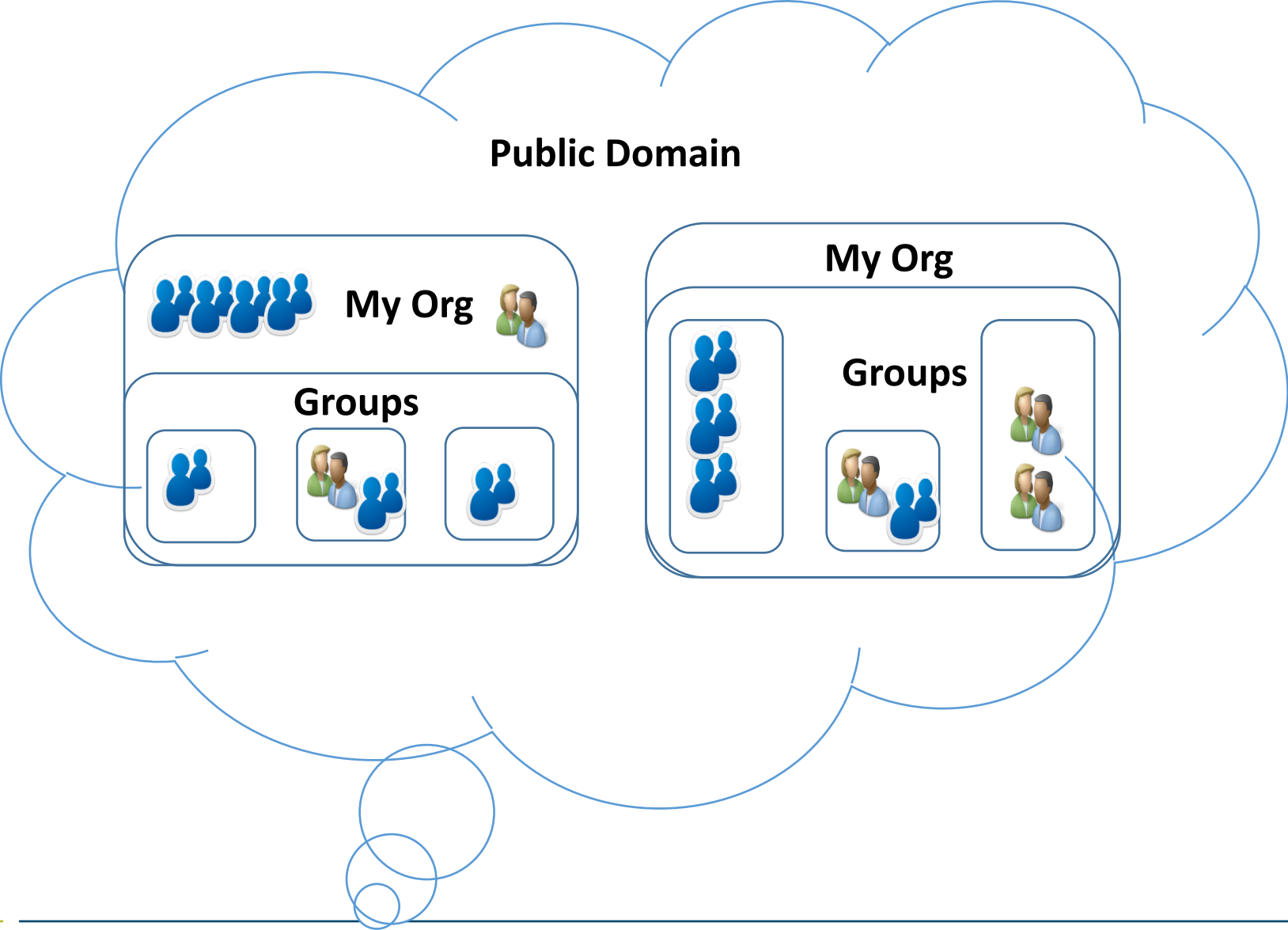
Data Flows



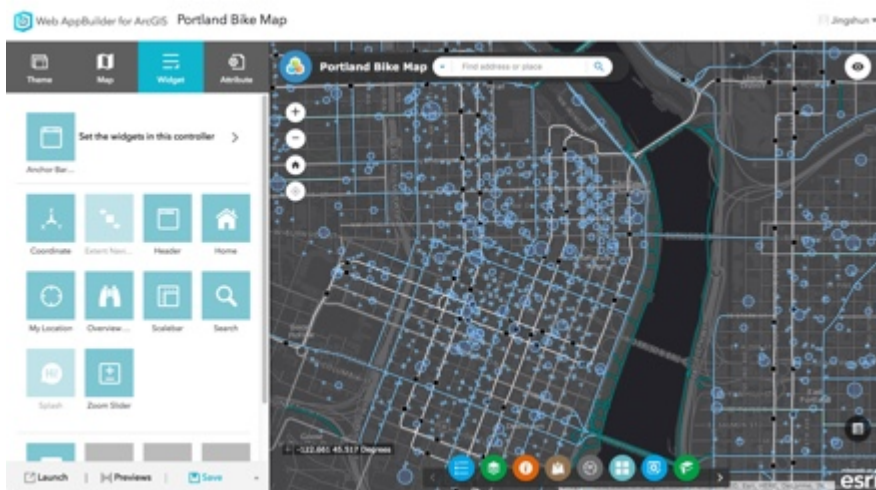
Security




Security







A close-up, low-angle shot of a sandy beach. Several footprints are visible, leading from the foreground towards the ocean in the upper right corner. The sand is a warm, golden-brown color, and the ocean water is a dark, shimmering blue-grey. The lighting is soft, suggesting a calm day.

We cripple people
who are capable
of walking
by choosing
to carry them.

DrLaura.com

Considerations

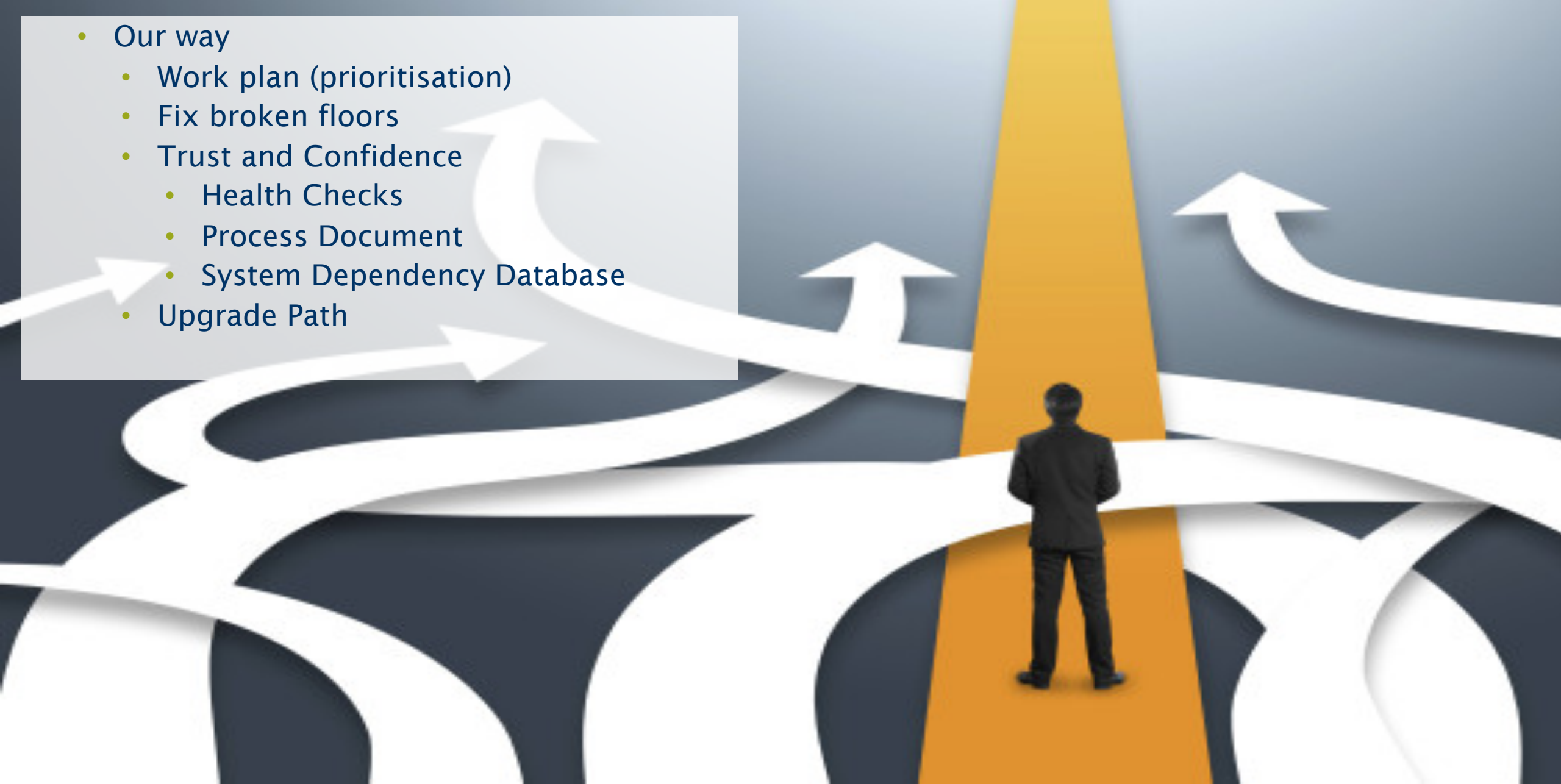
- Number of users
- Number of services
- Ownership / Governance

Options

- Use existing services
- Dedicated services
- Scale and optimise
- Separate Site



- Our way
 - Work plan (prioritisation)
 - Fix broken floors
 - Trust and Confidence
 - Health Checks
 - Process Document
 - System Dependency Database
 - Upgrade Path



Conclusions

- Cloud based publishing environment for our Enterprise Geospatial Capability
- Changes across the board
- Impacts
- Enabling
- Opportunities for the road forward

